



KX5600A

Ultrasound Scanner For Bovine



KAI XIN

XUZHOU KAI XIN ELECTRONIC INSTRUMENT CO.,LTD.

ADD: Kaixin Mansion, C-01, Economic Development Zone, Xuzhou, Jiangsu, China.

Zip Code: 221004

Tel: +86-516-87732932 / 87733758

Fax: +86-516-87732932 / 87792848

Http://www.kaixin-vet.com

E-mail: info@kxele.com / service@kxele.com

Our company certified by ISO13485

THE PRODUCT TAKES REAL OBJECT AS QUASI, IF ANY FLUCTUATION
HAPPENS, FORGIVING NO ANOTHER NOTICE IN THE LINE.



6.5MHz linear rectal probe



4.0MHz convex rectal probe



KAI XIN

XUZHOU KAI XIN ELECTRONIC INSTRUMENT CO.,LTD.

VET KX5600A

Ultrasound scanner for bovine

Goggle

Goggle is KAIXIN designed for medical equipment head-mounted virtual system. It replace the traditional display with much higher resolution, convenient portable outline to fully meet the requirement for outdoor use. Unique machine supply goggle power design, no battery required. It make sure you can see image by goggle when diagnosing, no delay.



Features of goggle

- Not touch the user's nose, no pressure.
- Rotary locking operation, adjust the tightness wearing facilitate everyone.
- Adjust the screen position of the eye and images remain the best viewing angle.
- Wearing cotton Velcro inner design, enhanced customers comfort, easy to clean.
- Design corner reserved for observation, user observing the surrounding environment.

Accessories



Waist strap



Goggle



Extension handle



Plastic seal box

Specifications

- Display Character in main interface: 2 kinds (have / none)
- Single probe configuration. Support for multiple customized probe
- Magnification: 8 grades, max depth is 220mm
- Power supply: 100-240V ~ 1.2-0.6A
- Frequency : 50-60Hz
- Battery : 1pc Internal lithium battery which can work more than 400 minutes
- Net weight: 1.5kg (including battery and probe)
- Output of adapter : DC12.8V 3.0A
- Main unit dimension: 190×150×53mm (L×W×H)

Configuration

- Main unit
- 6.5MHz linear rectal probe
- Power adapter
- Internal battery
- LEMO connector
- Power cord
- Soft rubber coat
- Probe holder
- Waist Strap
- Plastic seal box
- Goggle

Optional

- 4.0MHz convex rectal probe
- Extension handle(for rectal probe)





KX5600A marketing orientation

KX5600A is special for bovine-pregnancy check and fetus sex discrimination. It is very suitable for veterinarians and farmers with more than 500 PCS bovines, as well as the educational use for professors in university. The product operation is easy, convenient to carry, minimize fatigue during diagnosing, and it can help farmers increase economic performance by accurate results.

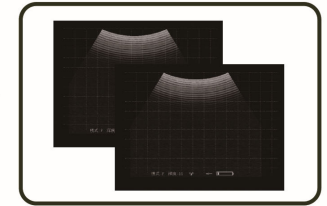
Features of machine

- KAIXIN patent 4.0Mhz convex rectal probe which has a 60 degree viewing angle, diagnose range is wider than normal probe. It makes customer diagnose conveniently and quickly.
- Support for 5 customized languages: English, Spanish, French, Russian and Portuguese.
- Goggle, meet use under strong sunshine outdoors.
- Drop resistance, splash-proof with soft rubber coat. Unique internal heat dissipation design, good dust-proof. Internal probe design, no need to change the probe.



Grid

Grid function can quickly check for gestation period.



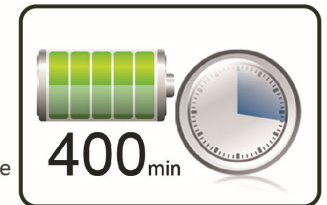
Portable

Light (1.5kg), waist design, easy to carry.



Battery

Internal lithium battery, more than 6 working hours to examine more bovines.



Buttons

Unique keyboard design, operate easily.

